



MORSE
CUTTING TOOLS

HOLDING  **SYSTEMS**TM

V-Flange Tool Holders CAT40 and CAT50



ER Collet Chucks

ER11 - ER16 - ER20 - ER25 - ER32 - ER40

End Mill Holders

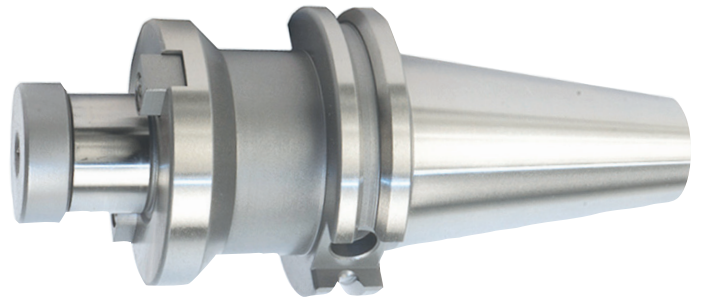
Sizes 1/8" thru 2"



Shell End Mill Holders

Sizes 1/2" thru 1-1/2" Pilot Dia.

Precision Ground CNC Tool Holders for a Wide Range of Applications



Phone: 800.255.1701 Fax: 800.338.4857
morsecuttingtools.com
customerservices@morsecuttingtools.com

End Mill Holders CAT40 and CAT50 V-Flange Shank



Runout: .0002"

Taper Shank Tolerance: AT3 or Better

Balancing: CAT40 = G2.5 at 20,000 RPM
CAT50 = G6.3 at 15,000 RPM

Coolant: Form AD — Central Coolant Through the Spindle

List No. 1013 – End Mill Holders – CAT40

List No. 1014 – End Mill Holders – CAT50

List No. 1013 – End Mill Holders – CAT40

TAPER	HOLE DIA.	GAGE LENGTH	NOSE DIA.	EDP NO.
CAT40	1/8	1.38	.69	19925
CAT40	1/8	4.50	.69	19926
CAT40	3/16	1.38	.69	19927
CAT40	3/16	2.50	.69	19928
CAT40	3/16	4.50	.69	19929
CAT40	3/16	6.00	.69	19930
CAT40	1/4	1.38	.78	19931
CAT40	1/4	2.50	.78	19932
CAT40	1/4	4.50	.78	19933
CAT40	1/4	6.00	.78	19934
CAT40	5/16	1.38	.88	19935
CAT40	5/16	4.50	.88	19936
CAT40	3/8	1.38	1.00	19937
CAT40	3/8	2.50	1.00	19938
CAT40	3/8	4.50	1.00	19939
CAT40	3/8	6.50	1.00	19940
CAT40	3/8	8.00	1.00	19941
CAT40	7/16	1.75	1.13	19942
CAT40	7/16	4.50	1.13	19943
CAT40	1/2	1.75	1.25	19944
CAT40	1/2	2.62	1.25	19945
CAT40	1/2	4.62	1.25	19946
CAT40	1/2	6.62	1.25	19947
CAT40	1/2	8.00	1.25	19948

TAPER	HOLE DIA.	GAGE LENGTH	NOSE DIA.	EDP NO.
CAT40	5/8	1.75	1.50	19949
CAT40	5/8	3.75	1.50	19950
CAT40	5/8	5.75	1.50	19951
CAT40	5/8	8.00	1.50	19952
CAT40	3/4	1.75	1.75	19953
CAT40	3/4	3.75	1.75	19954
CAT40	3/4	5.75	1.75	19955
CAT40	3/4	8.00	1.75	19956
CAT40	7/8	3.50	1.88	19957
CAT40	7/8	4.00	1.88	19958
CAT40	7/8	6.00	1.88	19959
CAT40	1	1.75	2.00	19960
CAT40	1	4.00	2.00	19961
CAT40	1	6.00	2.00	19962
CAT40	1	8.00	2.00	19963
CAT40	1-1/4	2.00	2.50	19964
CAT40	1-1/4	4.25	2.50	19965
CAT40	1-1/4	6.25	2.50	19966
CAT40	1-1/4	8.00	2.50	19967
CAT40	1-1/2	4.62	2.50	19968
CAT40	1-1/2	6.62	2.50	19969
CAT40	1-1/2	8.00	2.50	19970

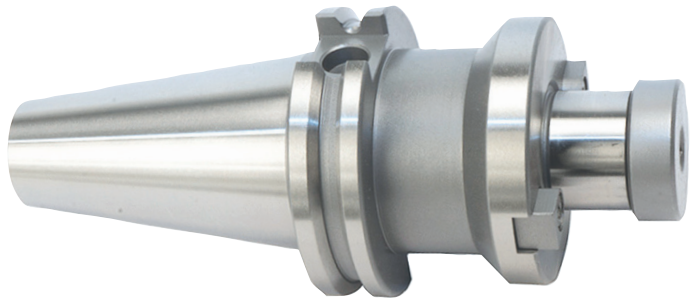
(continued)

List No. 1014 – End Mill Holders – **CAT50**

TAPER	HOLE DIA.	GAGE LENGTH	NOSE DIA.	EDP NO.
CAT50	3/16	2.50	.69	19975
CAT50	3/16	4.50	.69	19976
CAT50	1/4	2.50	.78	19977
CAT50	1/4	4.50	.78	19978
CAT50	1/4	6.00	.78	19979
CAT50	5/16	4.50	.88	19980
CAT50	3/8	2.50	1.00	19981
CAT50	3/8	4.50	1.00	19982
CAT50	3/8	6.50	1.00	19983
CAT50	3/8	8.00	1.00	19984
CAT50	7/16	2.50	1.13	19985
CAT50	7/16	4.50	1.13	19986
CAT50	1/2	2.62	1.25	19987
CAT50	1/2	4.62	1.25	19988
CAT50	1/2	6.62	1.25	19989
CAT50	1/2	8.00	1.25	19990
CAT50	5/8	3.75	1.50	19991
CAT50	5/8	5.75	1.50	19992
CAT50	5/8	8.00	1.50	19993

TAPER	HOLE DIA.	GAGE LENGTH	NOSE DIA.	EDP NO.
CAT50	3/4	3.75	1.75	19994
CAT50	3/4	5.75	1.75	19995
CAT50	3/4	8.00	1.75	19996
CAT50	7/8	4.00	1.88	19997
CAT50	7/8	6.00	1.88	19998
CAT50	1	4.00	2.00	19999
CAT50	1	6.00	2.00	20000
CAT50	1	8.00	2.00	20001
CAT50	1-1/4	4.25	2.50	20002
CAT50	1-1/4	6.25	2.50	20003
CAT50	1-1/4	8.00	2.50	20004
CAT50	1-1/2	4.62	2.50	20005
CAT50	1-1/2	6.62	2.50	20006
CAT50	1-1/2	8.00	2.50	20007
CAT50	2	5.62	3.75	20008
CAT50	2	8.00	3.75	20009

Shell End Mill Holders CAT40 and CAT50 V-Flange Shank



Runout: .0002"

Taper Shank Tolerance: AT3 or Better

Balancing: G6.3 at 15,000 RPM

Coolant: Central Coolant

List No. 1011 – Shell End Mill Holders – CAT40

List No. 1012 – Shell End Mill Holders – CAT50

List No. 1011 – Shell End Mill Holders – **CAT40**

TAPER	PILOT DIA.	GAGE LENGTH	EDP NO.
CAT40	1/2	1.38	19900
CAT40	3/4	1.38	19901
CAT40	3/4	3.50	19902
CAT40	1	2.06	19903
CAT40	1	4.00	19904

TAPER	PILOT DIA.	GAGE LENGTH	EDP NO.
CAT40	1-1/4	2.12	19905
CAT40	1-1/4	4.00	19906
CAT40	1-1/2	2.41	19907
CAT40	1-1/2	4.00	19908

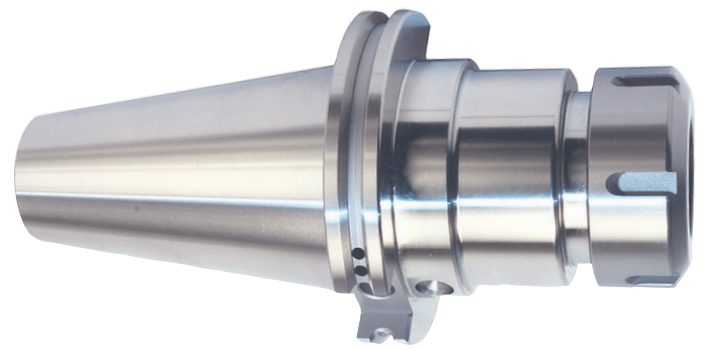
(continued)

List No. 1012 – Shell End Mill Holders – **CAT50**

TAPER	PILOT DIA.	GAGE LENGTH	EDP NO.
CAT50	1/2	1.38	19910
CAT50	1/2	3.50	19911
CAT50	3/4	1.38	19912
CAT50	3/4	3.50	19913
CAT50	3/4	6.00	19914
CAT50	1	2.06	19915
CAT50	1	4.00	19916
CAT50	1	6.00	19917

TAPER	PILOT DIA.	GAGE LENGTH	EDP NO.
CAT50	1-1/4	2.12	19918
CAT50	1-1/4	4.00	19919
CAT50	1-1/4	6.00	19920
CAT50	1-1/2	2.41	19921
CAT50	1-1/2	4.00	19922
CAT50	1-1/2	6.00	19923

**ER Collet Chucks
CAT40 and CAT50
V-Flange Shank**



Runout: .0001" on Clamping Length under 4"
 Runout: .0002" on Clamping Length over 5"
 Taper Shank Tolerance: AT3 or Better
 Balancing: G2.5 at 25,000 RPM
 Coolant: Form AD — Central Coolant Through the Spindle

List No. 1009 – ER Collet Chucks – CAT40
 List No. 1010 – ER Collet Chucks – CAT50

List No. 1009
 Collet Chucks – **CAT40**

TAPER	COLLET TYPE	GAGE LENGTH	NUT DIA.	EDP NO.
CAT40	ER11	2.50	0.75	19855
CAT40	ER11	4.00	0.75	19856
CAT40	ER11	6.00	0.75	19857
CAT40	ER16	2.50	1.26	19858
CAT40	ER16	4.00	1.26	19859
CAT40	ER16	5.00	1.26	19860
CAT40	ER16	6.00	1.26	19861
CAT40	ER16	8.00	1.26	19862
CAT40	ER20	2.50	1.38	19863
CAT40	ER20	4.00	1.38	19864
CAT40	ER20	6.00	1.38	19865
CAT40	ER20	8.00	1.38	19866
CAT40	ER25	2.50	1.66	19867
CAT40	ER25	4.00	1.66	19868
CAT40	ER25	6.00	1.66	19869
CAT40	ER25	8.00	1.66	19870
CAT40	ER32	2.75	1.97	19871
CAT40	ER32	4.00	1.97	19872
CAT40	ER32	6.00	1.97	19873
CAT40	ER32	8.00	1.97	19874
CAT40	ER40	3.00	2.48	19875
CAT40	ER40	6.00	2.48	19876
CAT40	ER40	8.00	2.48	19877

List No. 1010
 Collet Chucks – **CAT50**

TAPER	COLLET TYPE	GAGE LENGTH	NUT DIA.	EDP NO.
CAT50	ER16	4.00	1.26	19880
CAT50	ER16	6.00	1.26	19881
CAT50	ER16	8.00	1.26	19882
CAT50	ER20	4.00	1.38	19883
CAT50	ER20	6.00	1.38	19884
CAT50	ER20	8.00	1.38	19885
CAT50	ER25	4.00	1.66	19886
CAT50	ER25	6.00	1.66	19887
CAT50	ER25	8.00	1.66	19888
CAT50	ER32	4.00	1.97	19889
CAT50	ER32	6.00	1.97	19890
CAT50	ER32	8.00	1.97	19891
CAT50	ER32	12.00	1.97	19892
CAT50	ER40	4.00	2.48	19893
CAT50	ER40	6.00	2.48	19894
CAT50	ER40	8.00	2.48	19895

